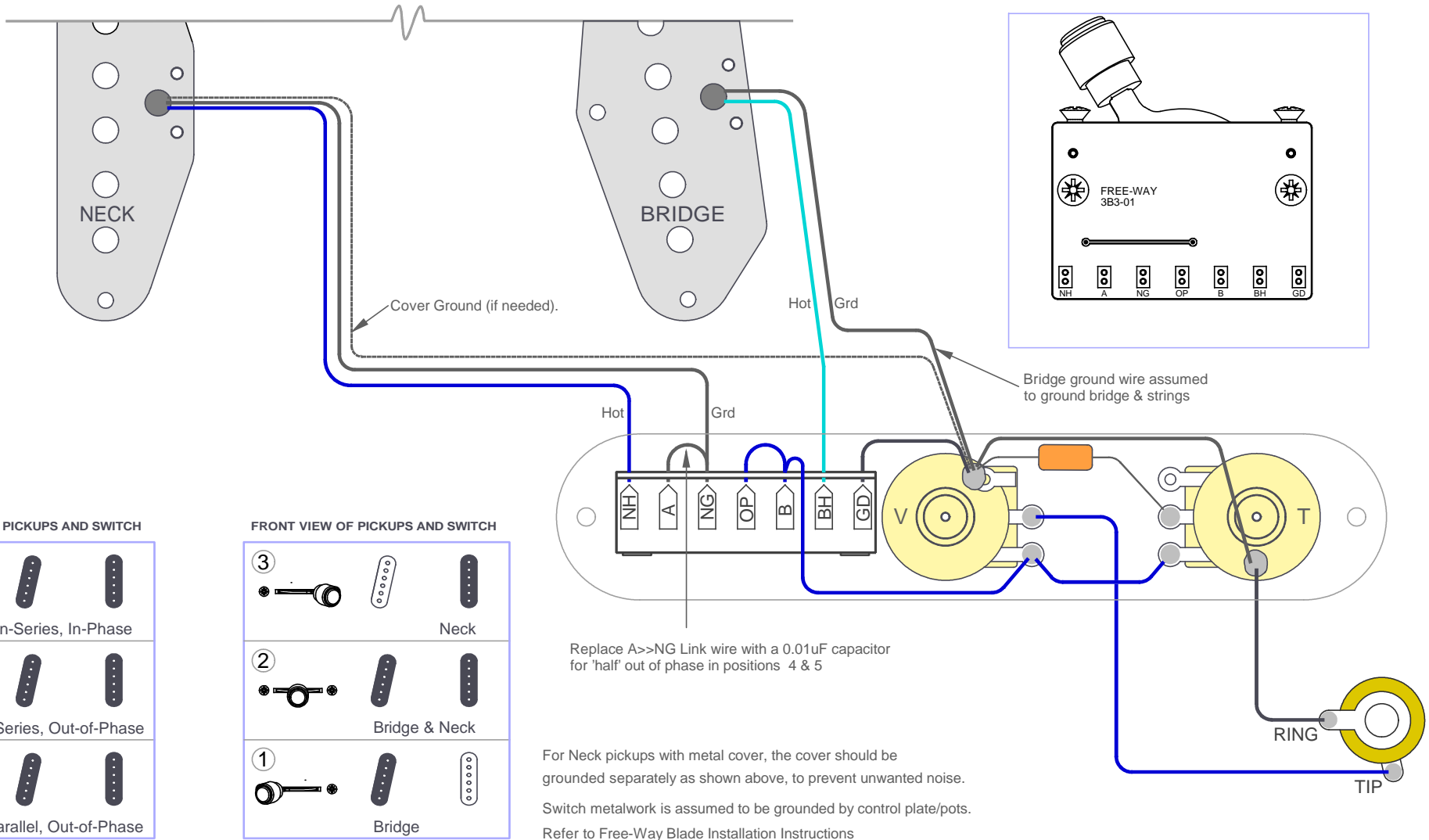


FREE-WAY SWITCH

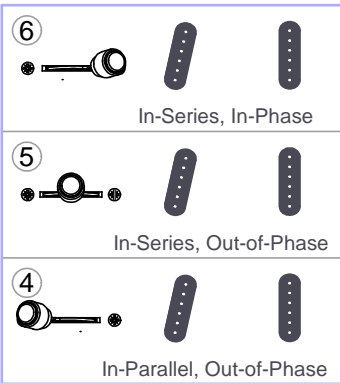
www.freewayswitch.com

MANUFACTURED IN ENGLAND BY NSF CONTROLS LTD

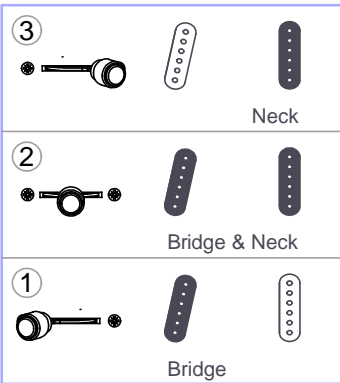
REVERSE VIEW OF PICKUPS, SWITCH AND POTENTIOMETERS.



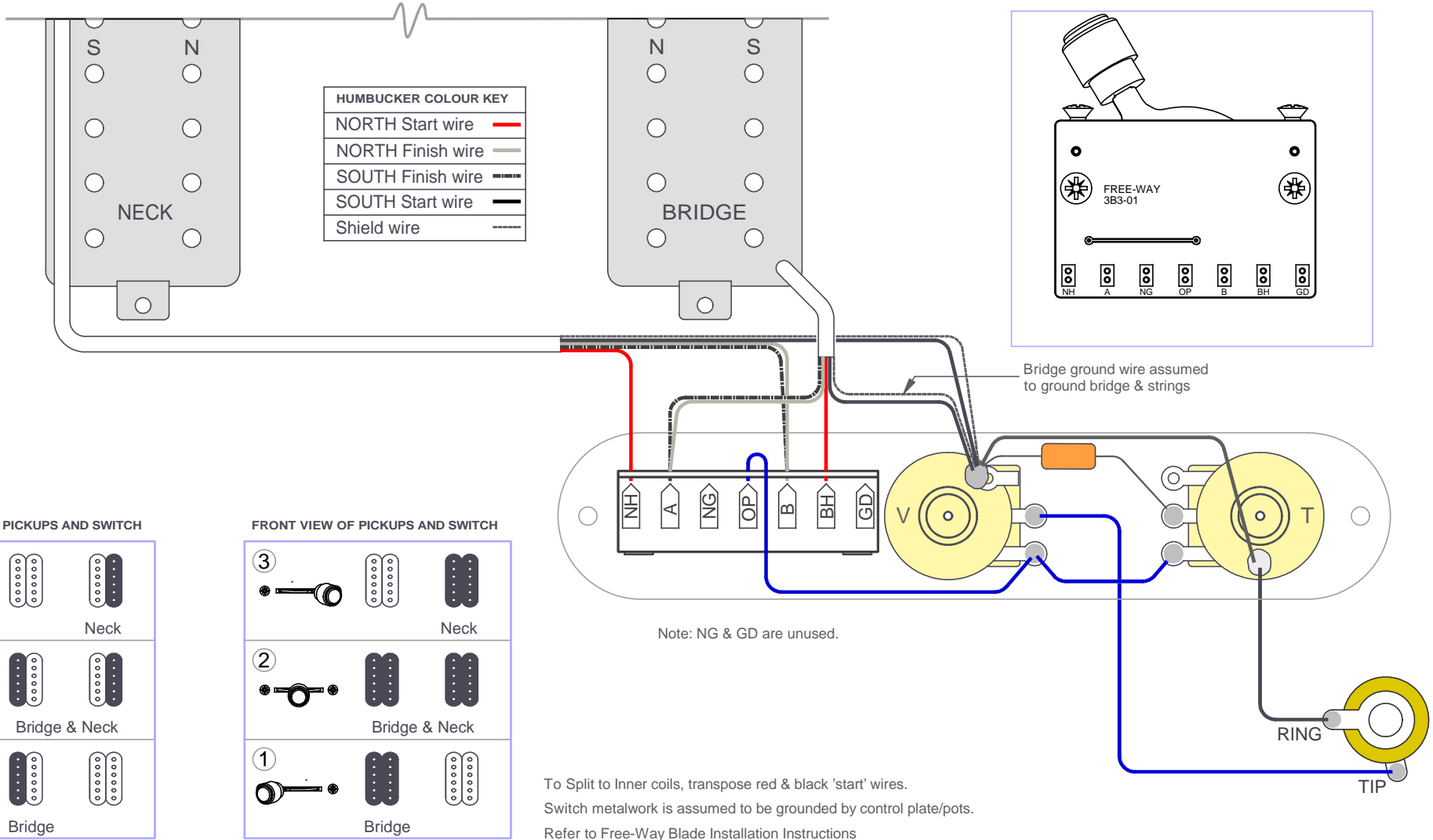
FRONT VIEW OF PICKUPS AND SWITCH



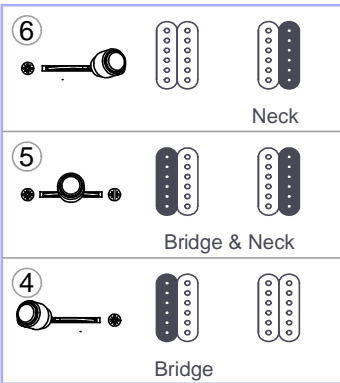
FRONT VIEW OF PICKUPS AND SWITCH



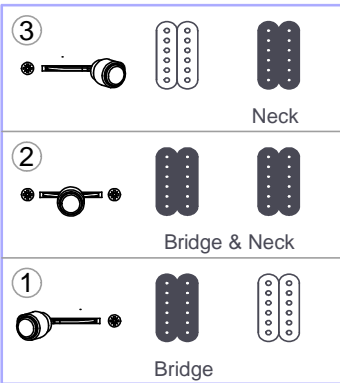
REVERSE VIEW OF PICKUPS, SWITCH AND POTENTIOMETERS.



FRONT VIEW OF PICKUPS AND SWITCH

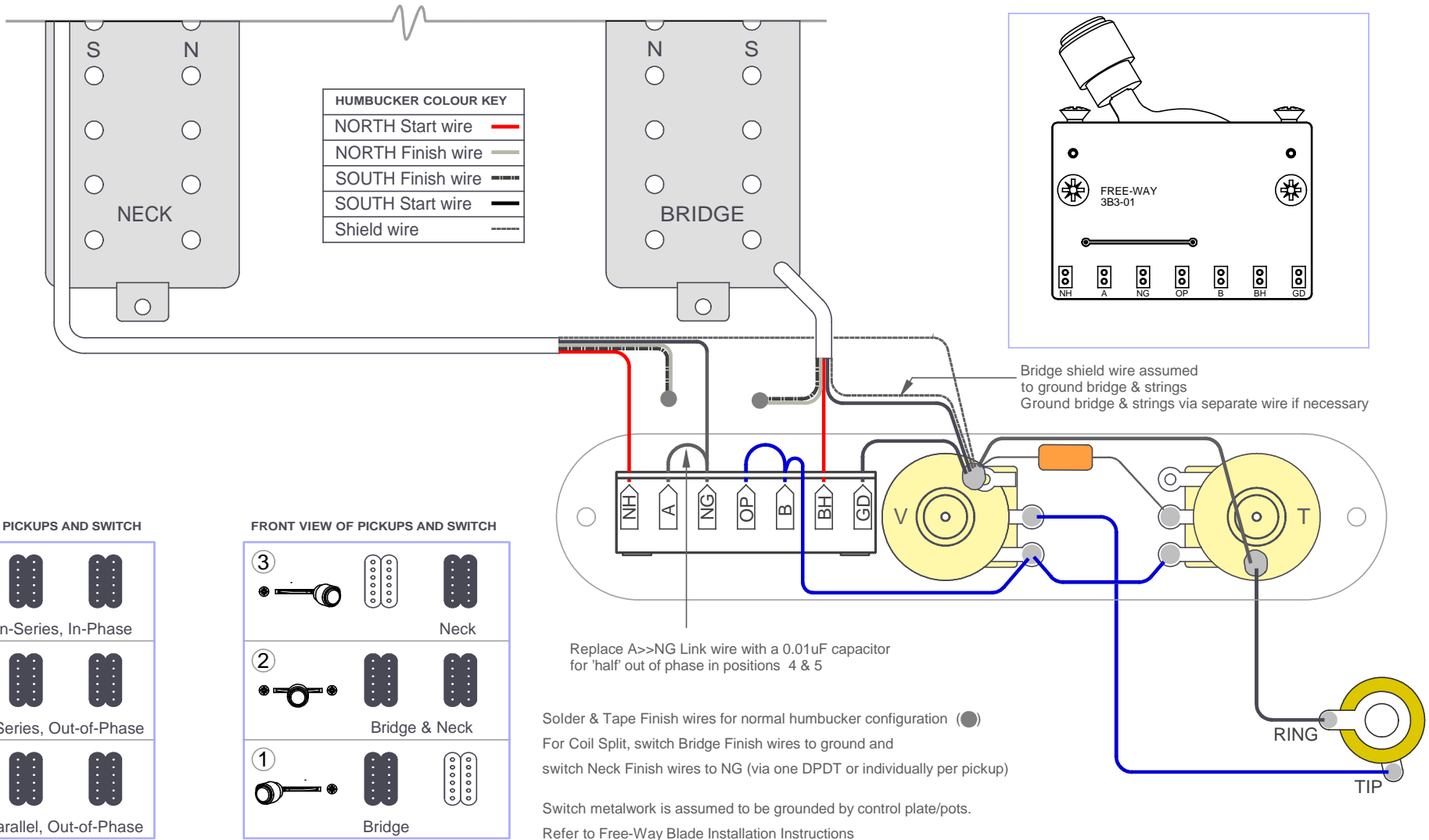


FRONT VIEW OF PICKUPS AND SWITCH

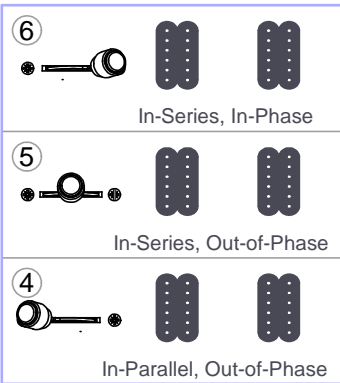


To Split to Inner coils, transpose red & black 'start' wires.
 Switch metalwork is assumed to be grounded by control plate/pots.
 Refer to Free-Way Blade Installation Instructions

REVERSE VIEW OF PICKUPS, SWITCH AND POTENTIOMETERS.



FRONT VIEW OF PICKUPS AND SWITCH



FRONT VIEW OF PICKUPS AND SWITCH

